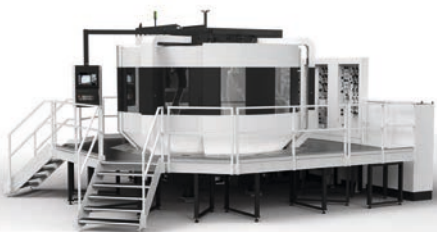


The flexible modular design allows both the complex processing of a variety of work pieces and the subsequent extension of the system.



MT-40-C

12, 16 or 20 machining stations
up to 5 axes per processing unit
6-sided processing of the work piece



TURNING



THREADING



SEMA Maschinenbau GmbH
Hessenberg 1, 4801 Traunkirchen, Austria
☎ +43 7617 3304
☎ +43 7617 3305
✉ office@sema.at
www.sema-maschinenbau.com

Company information: SEMA Product MT-C Flyer - Information for Customers and Interested Parties Publisher and person responsible for content: SEMA Management GmbH / Managing Director: Adolf Schacherleitner Tax ID No.: ATU41861008 - FN: 99977a Copyright notice: The content of these pages is protected by copyright. Copyright © 2023 SEMA Management GmbH - All rights reserved We accept no liability for printing errors, changes or mistakes. office@sema.at



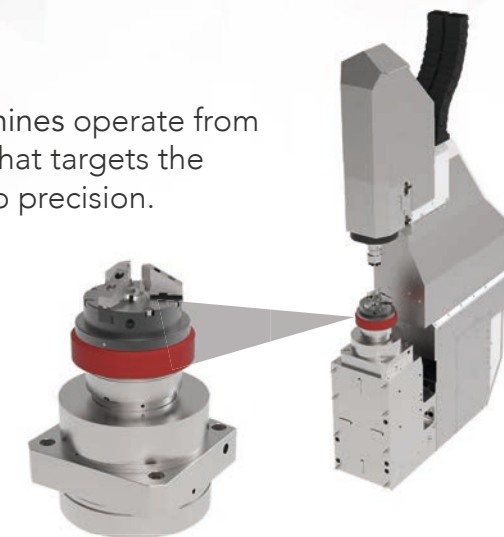
MT-C

MULTI TRANSFER SERIES

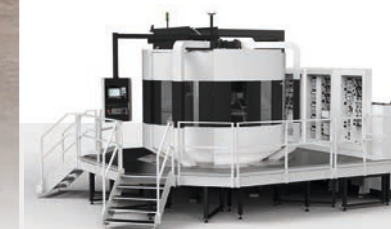
Transfer Machines for Serial Production
High Precision + High Volume

MT-C MULTI TRANSFER SERIES

The C-Series transfer machines operate from a pallet clamping system that targets the processing units with micro precision. Highest precision with the greatest flexibility.



The work piece can be processed in stationary or rotating mode and continuously positioned. It can be clamped as needed, either centrally using a 3-jaw chuck, a collet, or a mandrel.



MT-30-C

6, 8 or 10 machining stations
up to 5 axes per processing unit
6-sided processing of the work piece



DRILLING

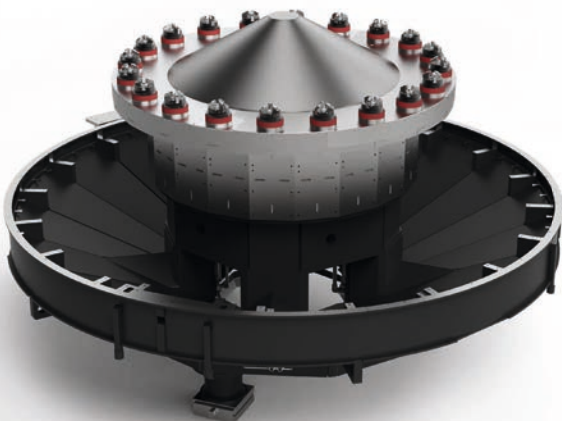


MILLING



MT-C

MULTI TRANSFER SERIES

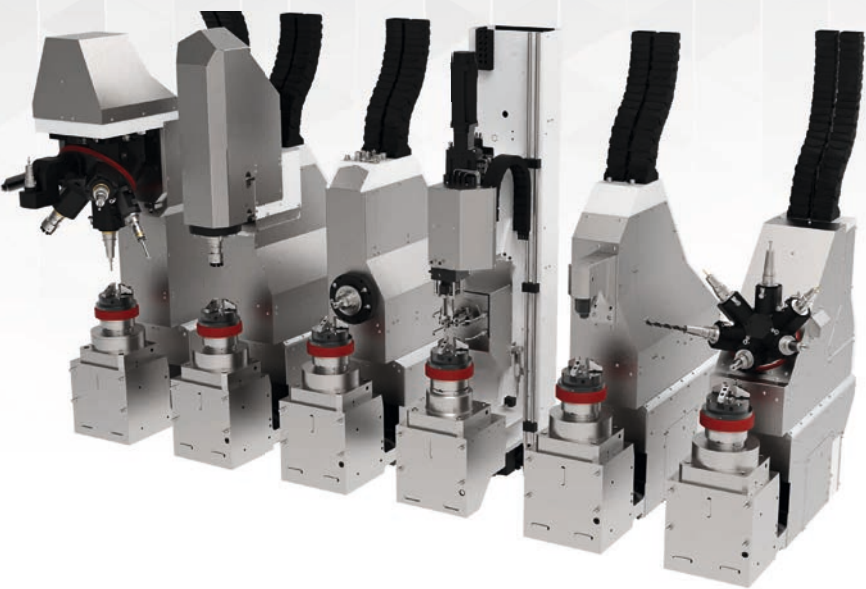


OPTIMISED CHIP FLOW

Efficient rinsing and complete coverage of the circular table minimize cleaning costs. The machine bed, designed with a steep slope, facilitates rapid removal of chips.

GOOD ACCESSIBILITY + MAINTENANCE

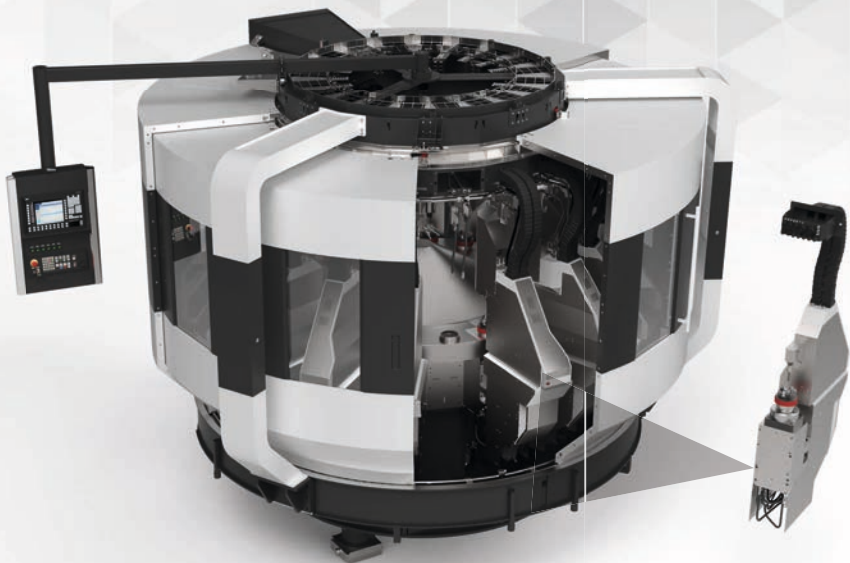
The clearly arranged operating and maintenance elements improve the ergonomic handling of the system. The extensive 300° swivel range of the control panel ensures a clear view of the individual machining stations in process monitoring.



COMPLEX MACHINING

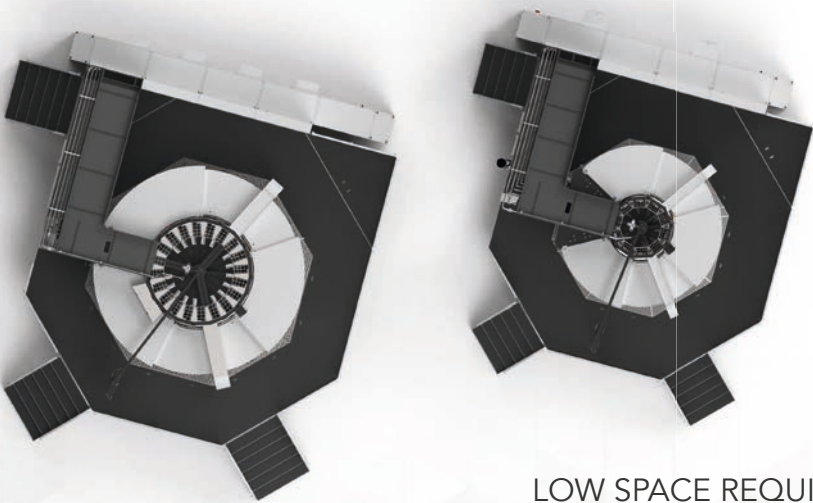
Sophisticated turning and milling processes are carried out on up to 5 axes per processing unit. In addition to vertical and horizontal tool spindles, the individual processing units can be equipped with a tool turret, designed for turning operations, or used to reposition the workpiece.

Performance Data	Stations
Feed Axis Positioning Accuracy	≤ 0,003 mm
Various Tool Spindle Variants (C/A)	HSK40, HSK50, HSK63, HSK80
Rated Torque of the Motor Spindle	max. 100 Nm
Speed of the Turning/Positioning Spindle	max. 5.500 U/min
Rated Torque of the Turning/Positioning Spindle	max. 120 Nm
Turning Operations	Capto C5



FLEXIBLE MODULAR DESIGN

Standardized machine components and sophisticated modules enable a wide range of different configurations, suitable for various requirements. Processing units can be quickly replaced or expanded.



LOW SPACE REQUIREMENT

The modern and compact design of the system allows for higher output per square meter of floor space.

MT-C



BASIC DATA	MT-30-C	MT-40-C
Numer of Stations	6 / 8 or 10	12 / 16 or 20
Machine Base Dimensions (L/W/H mm)	4.600/4.600/3.500	5.800/5.800/3.600
Overall System Dimensions (L/W/H mm)*	8.450/8.150/3.800	9.650/9.450/4.150
Machine Weight (standard configuration)	max. 16.000 kg	max. 28.000 kg
Control System (19" display)	Siemens Sinumerik ONE, Fanuc	
Material Feeding Method	bar, bulk, tray	
Loading / Unloading	automatic, semi-automatic	

*Machine, Platform, Control Cabinet — without automation solutions and coolant system

PERFORMANCE DATA	MT-30-C	MT-40-C
Table Indexing Time (at max. stations)	1,0 sec	
System Accuracy	≤ 0,02 mm	
Workpiece Clamping	jaw chuck, collet, mandrel	
Workpiece Dimensions (L/B/H mm)	max. 100/100/100	max. 100/100/100
Travel Distance excl. Rotary Expansion (X/Y/Z)	max. 50/100/90	max. 50/100/90
Rapid Feed Rate of Feed Axes	30 m/min	30 m/min
Number of NC Axes	max. 62	max. 93
Coolant Supply Pressure	max. 80 bar	

For special requirements that are not covered by the standardized configuration options, every machine concept can be implemented as a custom model (MT-S) - tailored to the specific workpiece.